

QUICK START GUIDE

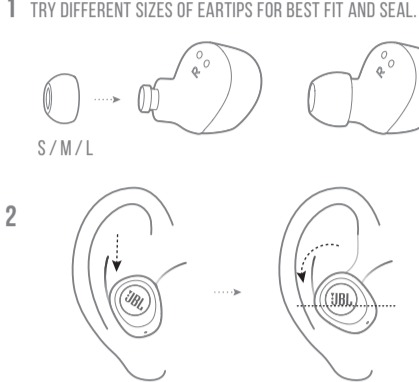
WAVE100TWS



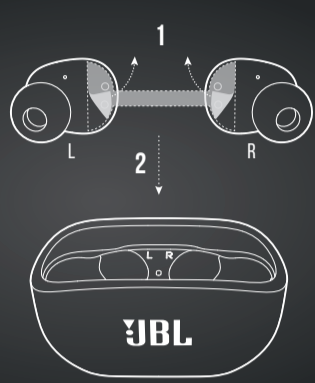
WHAT'S IN THE BOX



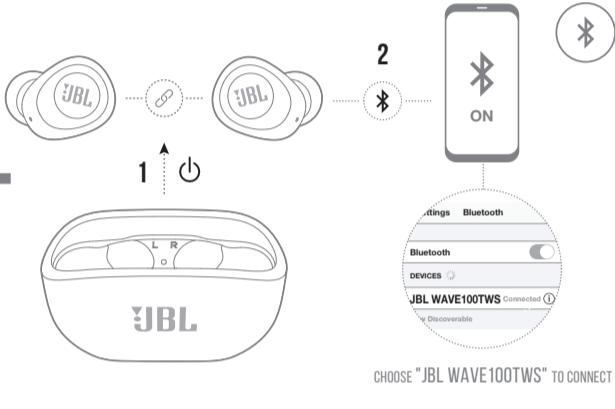
HOW TO WEAR



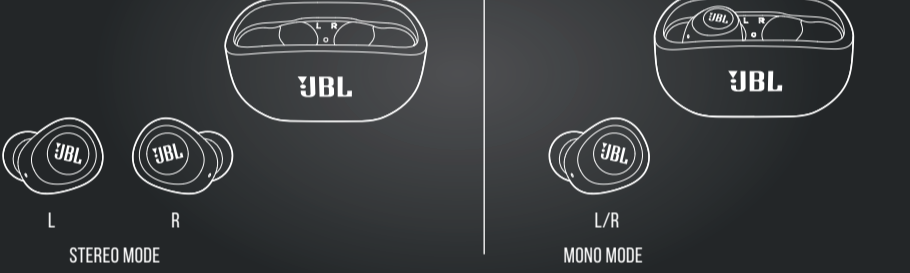
FIRST TIME USE



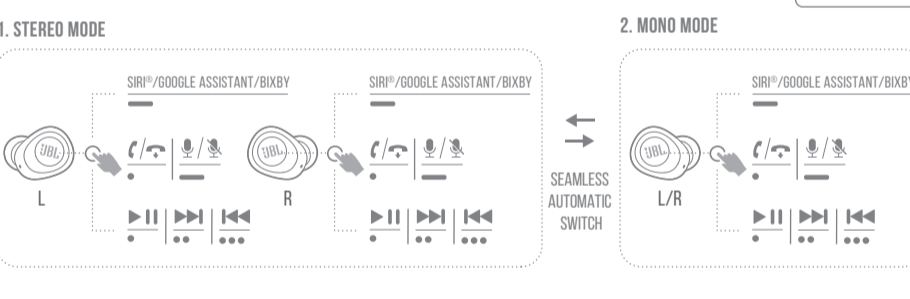
POWER ON & CONNECT



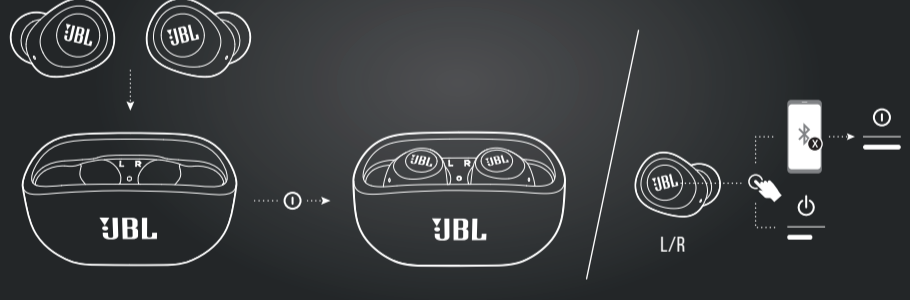
DUAL CONNECT



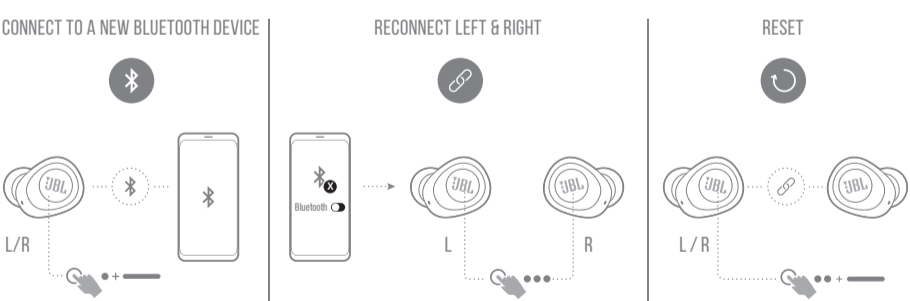
BUTTON COMMAND



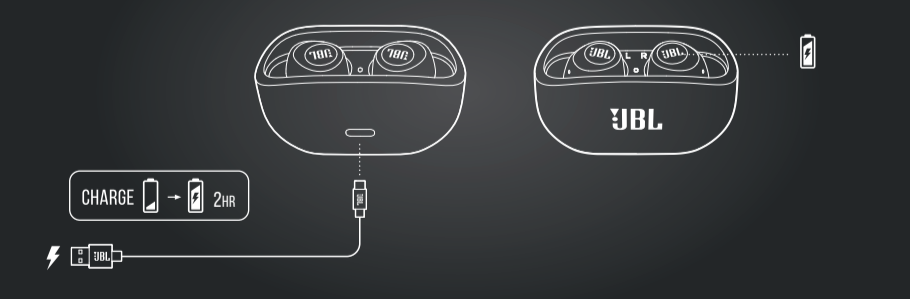
POWER OFF



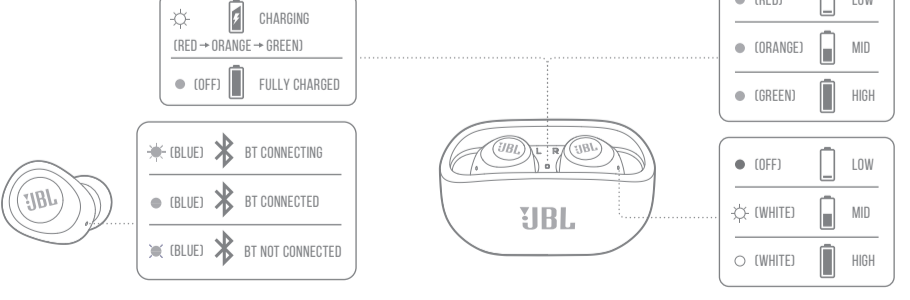
MANUAL CONTROLS



CHARGING



LED BEHAVIORS



TECH SPEC

Model: WAVE100TWS
 Driver Size: 8 mm / 0.31" Dynamic Driver
 Power supply: 5V --- 1 A
 Weight: 46.3 g / 0.102 lbs
 Earpiece: 5.1 g / 0.011 lbs (10.2 g / 0.022 lbs combined)
 Charging case: 36.1 g / 0.08 lbs
 Headset battery type: Lithium-ion Battery (45 mAh / 3.7 V)
 Charging case battery type: Lithium-ion Battery (550 mAh / 3.7 V)
 Charging time: 2 hrs from empty
 Music playtime with BT on: up to 5 hrs
 Frequency Response: 20 Hz - 20 kHz
 Impedance: 16 ohm
 Sensitivity: 105.5 dB SPL@1kHz
 Maximum SPL: 94 dB
 Microphone sensitivity: -11.3 dBV@1 kHz / Pa
 Bluetooth version: 5.0
 Bluetooth profile version: A2DP V1.3 AVRCP V1.6 HFP V1.7
 Bluetooth transmitter frequency range: 2.4 - 2.4835 GHz
 Bluetooth transmitter power: < 10 dBm
 Bluetooth transmitter modulation: GFSK, n/4-DQPSK, 8-DPSK
 Maximum operation temperature: 45°C

